



**STEM
Portal**

Introducing the IEEE Volunteer STEM Portal

IEEE Region 10 Meeting

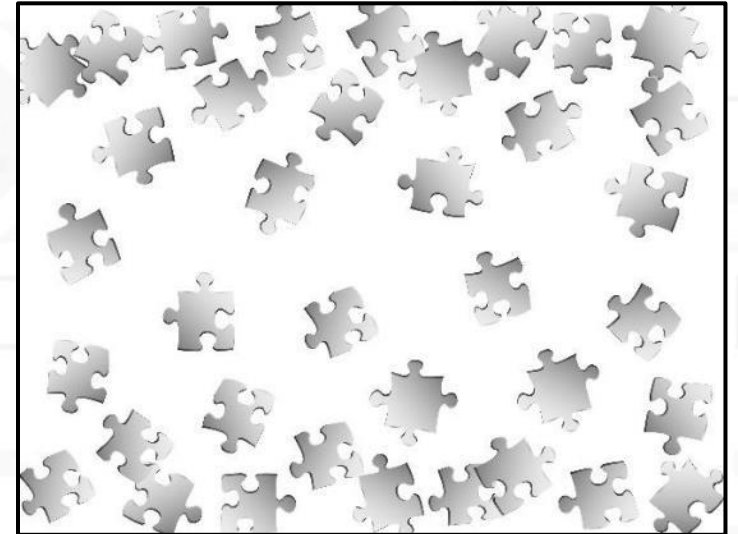
7 March 2021

The Challenge for IEEE's STEM Pre-University Education Programs: A Fragmented Landscape

There are many volunteer-led pre-university STEM activities happening globally, but...

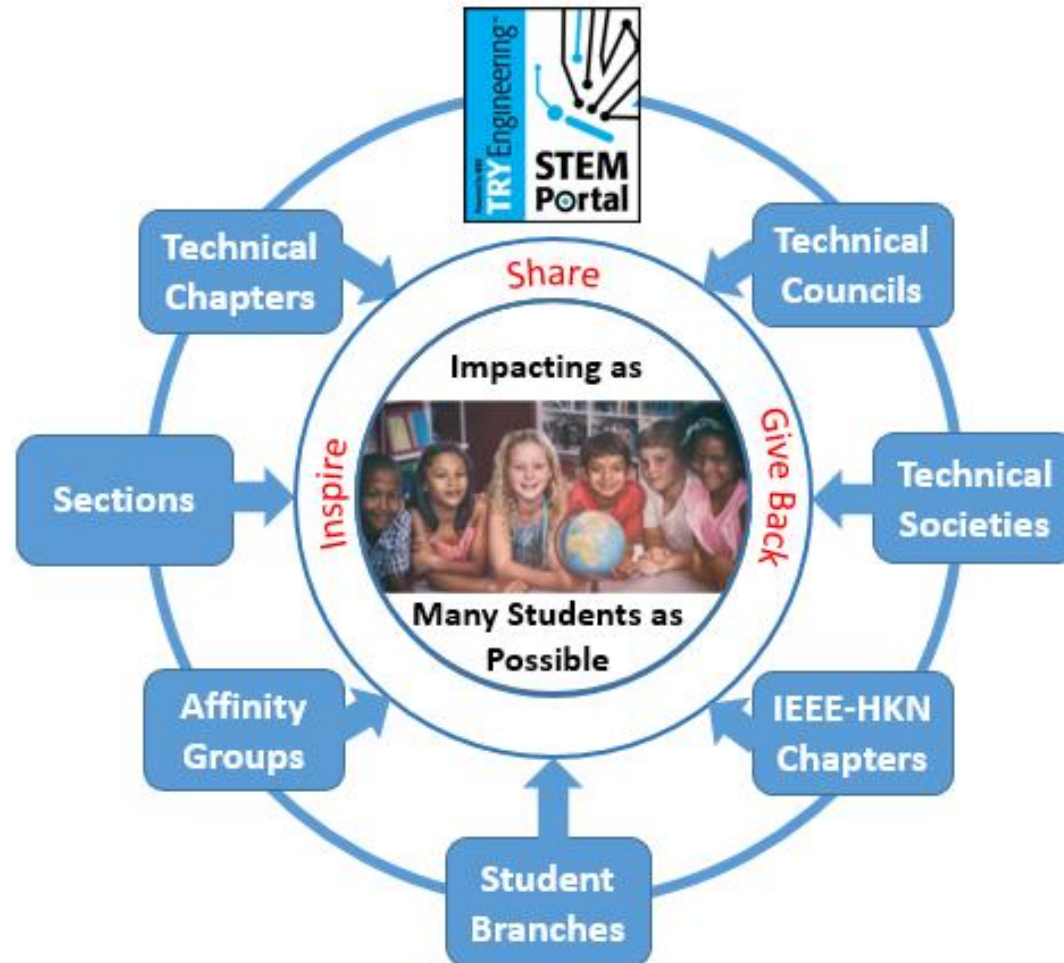
We do not know collectively what is being done across the institution. There is no:

- Place for volunteers to **SHARE** and showcase their effective programs with each other
- Set of STEM education **RESOURCES** from IEEE that volunteers can draw from when developing local STEM programs
- **IMPACT DATA** of our collective IEEE STEM efforts



Objective: Leveraging IEEE's Global Communities

The **Volunteer STEM Portal** is a resource that employs the power of IEEE volunteer expertise, experience and range to drive STEM outreach



To Engage and Impact as Many Students as Possible!

IEEE Volunteer STEM Portal: Share. Give Back. Inspire

Features

- **Searchable library** of current STEM and pre-university programs (*developed by IEEE's global communities and Partners*)
- **Resources** to support current or new STEM programs
- **Metrics and Impact** mechanism
- **Awards and Recognition** program
- **Development grants** (coming soon)



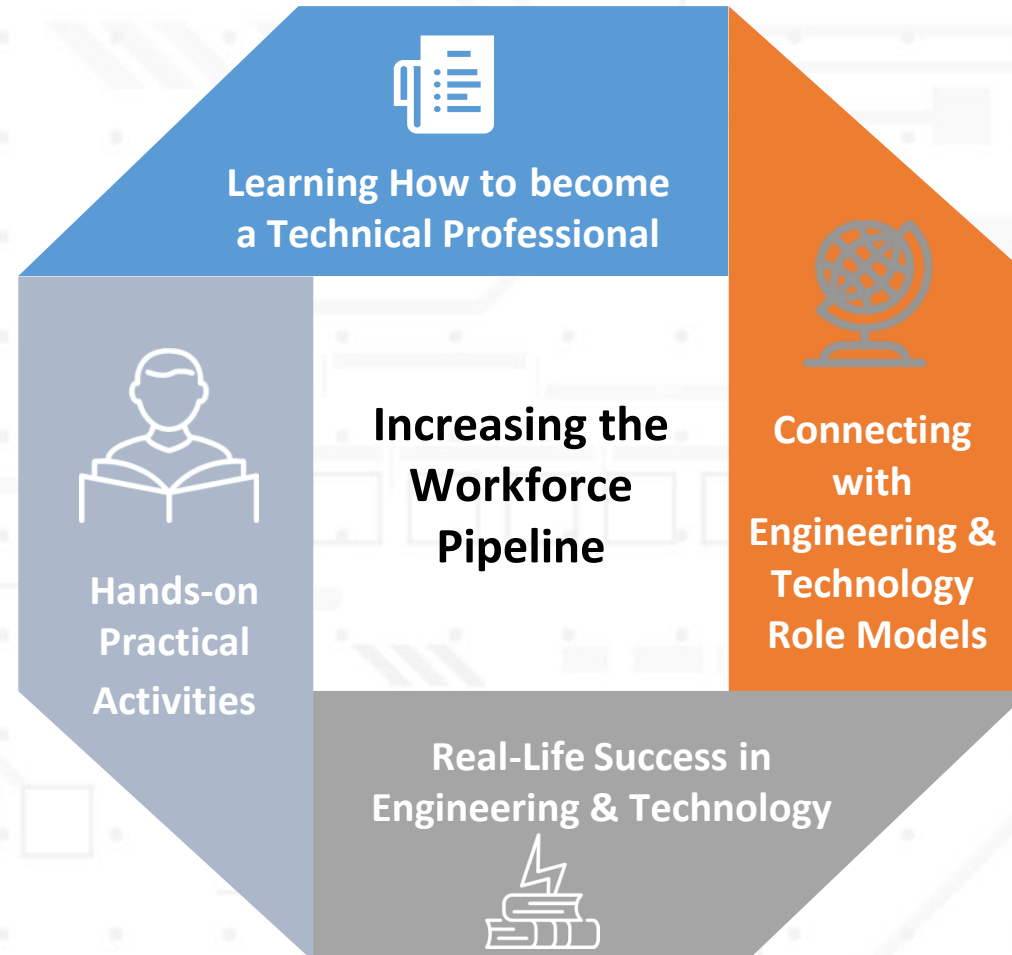
Volunteer Engagement

- **Ability** to share your programs
- **Find** a program to host/organize
- **Learn** best practices
- **Make** STEM connections
- **Build** a Local STEM community
- **Impact** as many students as possible

Mission and Vision

Mission:

Providing opportunities and resources for volunteer generated STEM activities to impact as many students as possible



Vision:

Youth Will See Themselves as Someone Who Can Improve the World Through Engineering & Technology

Volunteer STEM Portal Demo

The screenshot displays the TRY Engineering website interface. At the top, the TRY Engineering logo is accompanied by the text "Powered by IEEE". To the right, a navigation menu includes "Teachers", "Students", "Volunteers", "About", and a search icon. The IEEE logo is positioned in the top right corner.

The main content area is divided into three vertical panels, each with a representative image and a corresponding call-to-action box:

- Teachers:** The top image shows a teacher and students working on a project. The call-to-action box is blue and contains the text "Teachers: Resources for Your Classroom" and a list of links: "Lesson Plans" and "Teacher Resources".
- Students:** The top image shows three students looking at a tablet. The call-to-action box is green and contains the text "Students: Explore Engineering" and a list of links: "Engineering Fields" and "Games".
- IEEE Volunteers:** The top image shows a teacher presenting to a class. The call-to-action box is orange and contains the text "IEEE Volunteers: Resources for STEM Outreach" and a list of links: "Search for a Program" and "Resources".

The Envisioned Future

IEEE's Global Communities: Engaged in Pre-University STEM Activities

Mobilizing the global reach of IEEE to *impact as many students as possible* with hundreds of STEM activities offered each year!



Join Our STEM Team

Volunteer STEM Portal

- [Share](#) your great programs
- [Participate](#) in the pilot



Join our IEEE Pre-University [Collabratec Community](#) and [TryEngineering Facebook Group](#)



IEEE TryEngineering Community

FOR MORE INFORMATION CONTACT:

Lorena Garcia lorenagarcia@ieee.org, Burt Dicht b.dicht@ieee.org, Dawna Schultz d.j.schultz@ieee.org