

IEEE Member & Geographic Activities

Kukjin Chun
2021 Past Vice President, IEEE MGA
January 2021

IEEE PROPRIETARY

MGA Mission & Vision

Vision: MGA will continue to provide quality member opportunities for continuous engagement

Mission: Inspire, Enable, Empower and Engage Members of IEEE

For the purpose of...

- Fulfilling the mission of IEEE
- Enhancing the member's growth and development through their life cycle
- Providing a professional community for engineers, scientists, and technologists
- Providing a way to employ technologies to serve communities globally
- Offering an opportunity for external individuals, organizations, and industry to engage with IEEE for the benefit of Humanity

Goals

- Increase member engagement and grow membership.
- Improve relationships with and among members.
- Enhance collaboration and cooperation with and among IEEE organizational units and external organizations.
- MGA supports and encourages local geographic units in providing services and value to IEEE members
- Increase operational efficiency and effectiveness within MGA.

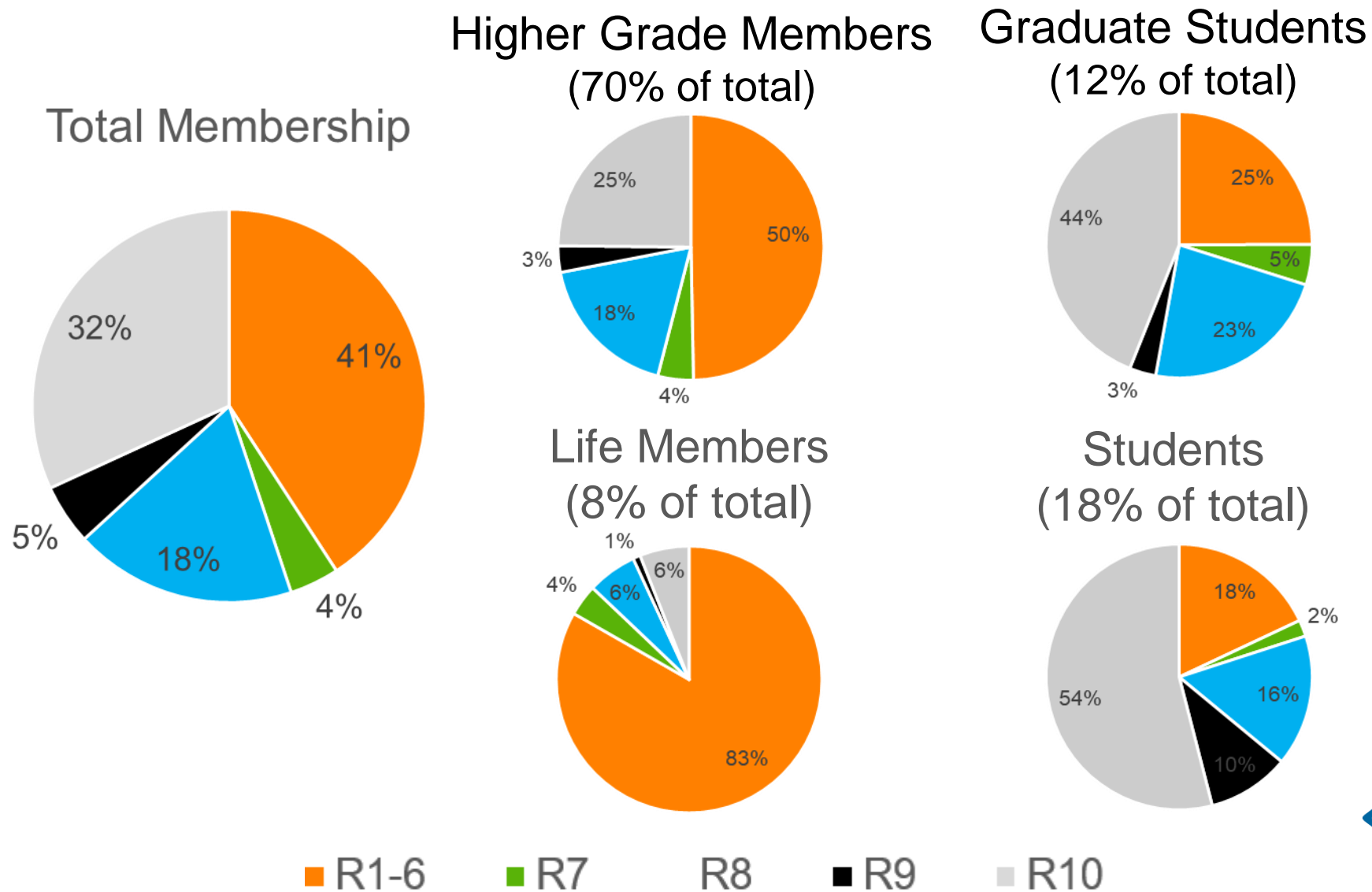


MGA Strategies

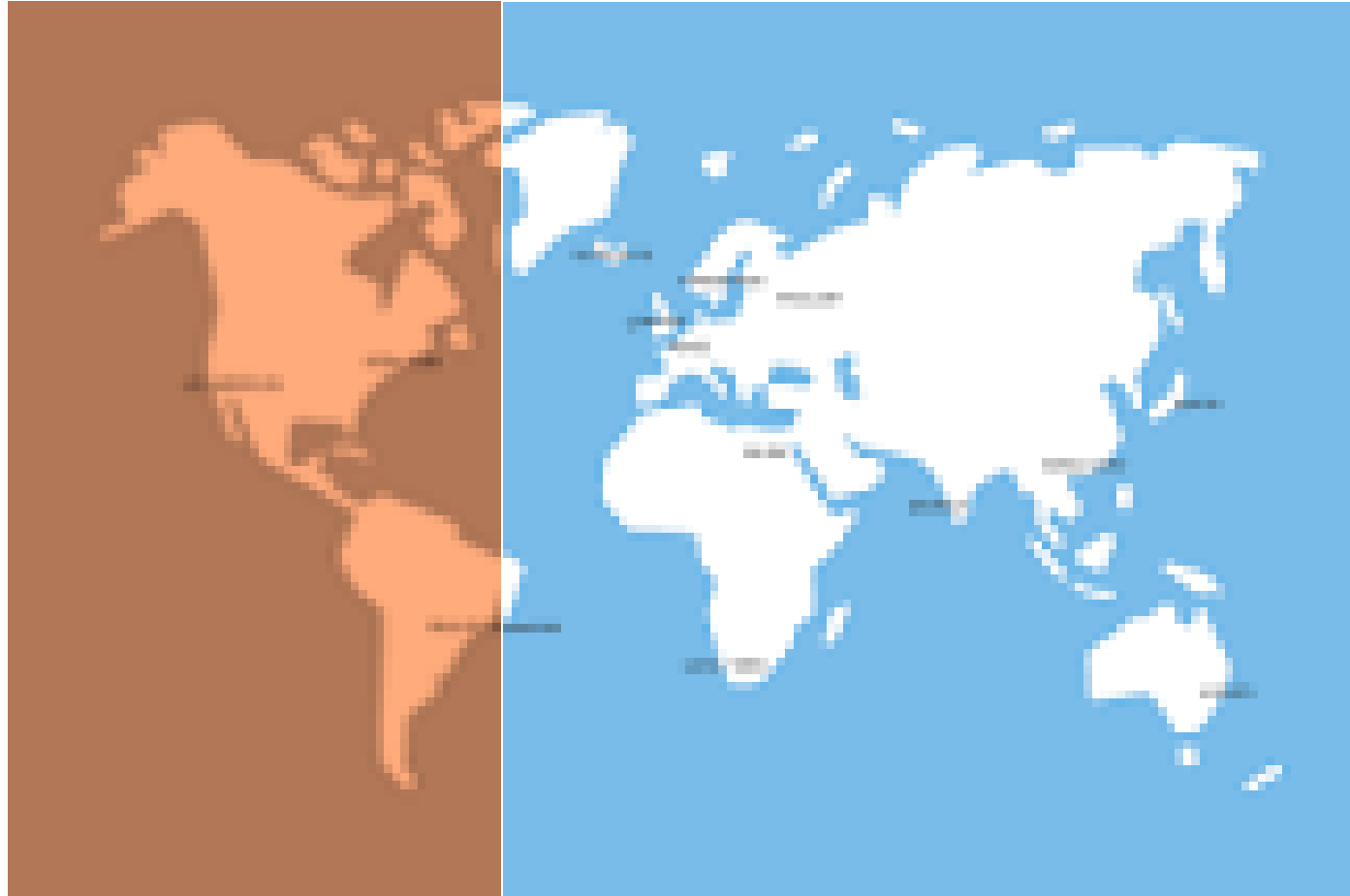
Strategies

- Increase the value of IEEE membership at each stage of the member's life cycle.
- Support volunteering and facilitate member and nonmember collaboration.
- Strengthen the relevance of IEEE membership to industry.
- Promote diversity and inclusion.
- Improve member development and services based on data.
- Enhance the relevance of information available to the member and to geographic units.
- Provide a simple, consistent, personalized interface to members and prospective members.

Membership Distribution



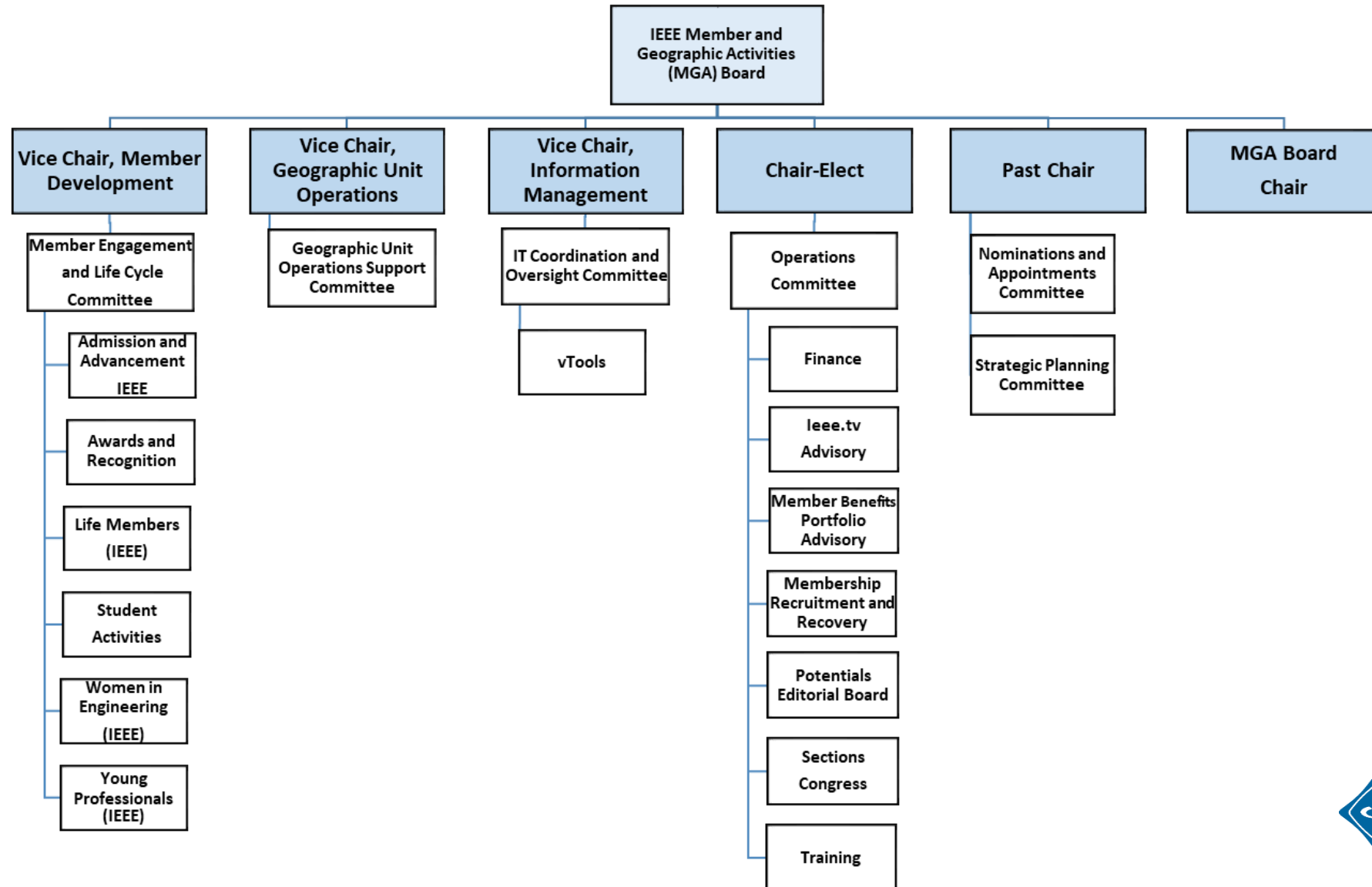
Future IEEE Regions



6 Regions

4 Regions

MGA Board Committee Structure 2021



Charge and Cost in Technical Co-Sponsorship

- ▶ **Current TCS charge : \$1000/conference plus \$15/paper**
 - The charge was intended to cover an appreciable portion of the cost associated with TCS
 - Sponsoring OUs had an option of paying the charge or billing the conference – “cost recovery”
 - It was anticipated that the TCS charge would moderate the growth of TCS conferences
 - 2016-2017 the TCS charge was absorbed at the MGA board level
 - In 2018, it was decided to start passing the TCS charge to the sponsoring Geo Unit or the conference
 - The rest 1/3 TCS cost as overhead charge spreads to TCS participating & non-participating OUs
 - TCS cost charged to OUs who don't do TCS
 - 100% TCS Cost Allocation : from January 1, 2022

Chapter Support

- ▶ Chapters need support similar to the way the Geographic Unit Operations Support Committee (GUOS) provides support to Sections
 - Due to the large number of Chapters (approximately 2,400) and the fact that Chapters have “two parents” (MGA and TA), the committee will work hand-in-hand with the GUOSC, the MGA Training Committee, and Society/Council (S/C) Chapter Coordinators
- ▶ Implement **welcome letters** and include links to training and other resources; send to new Chapter officers. Implement a Chapter **self-assessment**, similar to the Section self-assessment that is done annually.
- ▶ Add an area within the **Center for Leadership Excellence** specifically for Chapters. Training and best practices will be here – gather and publish existing training/best practices this year
- ▶ Encourage all S/Cs, Regions and Sections with multiple Chapters to have a **Chapter Coordinator**.
- ▶ Create a **report tool** showing Chapter activities and improve L31 reporting
- ▶ Update governing docs to clarify issue with **Chapter finances**.

