



2021 IEEE R10 EXCOM Virtual Meeting

Date: 10 January 2021

2020 R10 WIE Committee Report

Emi YANO
2019-2022 R10 WIE Committee Chair



2020 R10 WIE Committee Report

Committee Structure

Chair: Emi Yano

Members: Agnes Irwanti (Indonesia)
Basabi Chakraborty (Sendai, Japan)
Fatemeh Jalali (Victorian, Australia)
JeongYon Shim (Seoul, Korea)
Jing Dong (Beijing, China)
Maheshi Dissanayake (Sri Lanka)
Rachana Garg (Delhi, India)
Shanza Khan (Karachi, Pakistan)
Tasnim Binte Shawkat (Bangladesh)

Advisor: Takako Hashimoto (Tokyo, Japan)

Objectives

1. Promote women involvement in science and engineering in R10
2. Facilitate the development of supporting program and activities of WIE in R10
3. Enhance networking and knowledge sharing of WIE
4. Recognize WIE's outstanding achievement in R10 and promote nominations for MGA awards from R10

Projects / Tasks

Project 1: WIE Engagement Project
Project 2: Development WIE Change Makers
Project 3: WIE Visibility Enhancement
Project 4: R10 WIE Award

Outcomes

Project 1:

(1) 5 Section WIE and 19 SB WIE were established in 2020. The 51 Sections have WIE AG.

(2) **12,061 WIE members**

(3) 93 WIE delegates nominated by Sections for R10 SYWL Virtual Congress 2020

Project 2: - (No Travel)

Project 3:

- WIE and WePower Track at TENSYP2020
- Special WIE Track at TENCON2020

Project 4:

- Total 45 submissions for R10 WIE Awards (4 categories)
- 2 MGA WIE Awards Winners from R10

Finance

1. Project 1: 1,500 USD
2. Project 2: 0
3. Project 3: 0
4. Project 4: 0
5. Travel: 0

Total Finance : 1,500 USD

IEEE Region 10 WIE Committee 2020



Agnes Irwanti
Indonesia Section



Basabi Chakraborty
Sendai Section



Fatemeh Jalali
Victorian Section



JeongYon Shim
Seoul Section



*Advisor
Takako Hashimoto
Tokyo Section



Jing Dong
Beijing Section



Maheshi Dissanayake
Sri Lanka Section



Rachana Garg
Delhi Section



Shanza Khan
Karachi Section



Tasnim Binte Shawkat
Bangladesh Section

<Supporting Volunteers>

Hiba Latifee, Karachi Section

Mushfika Baishakhi Upama, New South Wales Section

Finance Analysis

	Project	Actual Expense in 2020
1	WIE Engagement Project	1,500 USD / 6,500 USD - R10 SYWL Congress SAC & WIE Contest
2	Travel Fund for WIE ILS - Pending	0 USD / 3,000 USD - Virtual Events (No Travel) ILS Nagpur/Madras
3	WIE Track at R10 Flagship Conference	0 USD / 1,500 USD - Virtual Events - WIE and WePower Track at TENSYP 2020 - Special WIE Track at TENCON 2020
4	R10 WIE Awards	0 USD / 0 USD As planned
5	Travel Budget (R10 WIE Chair) ✓ R10 SYWL Congress (Bangkok) ✓ TENCON2020 (Osaka, Japan) ✓ WIE ILS (Lahore/Coimbatore/Nagpur)	0 USD / 4,000 USD - Virtual Events (No Travel)
	TOTAL	1,500 USD / 14,500 USD



1. WIE Engagement Project

INTERNATIONAL WOMEN
IN ENGINEERING DAY
23 June 2020



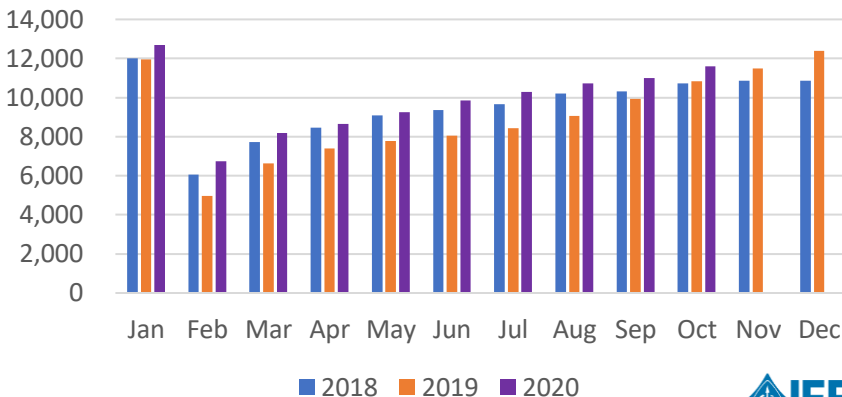
51 /59 Sections have WIE AG

- **12,061 WIE members** (As of December 14, 2020)
- **New WIE Affinity Groups in 2020**
 - **5 New Section WIE:** Guangzhou (China), Tokyo/Shin-Etsu Joint(Japan), New Zealand Central, Shikoku/Hiroshima/Fukuoka Joint(Japan), Vizag Bay (India)
 - **19 New WIE SB**

8 Sections without AG

- Busan (Korea)
- Chengdu (China)
- Daejeon (Korea)
- Gwangju (Korea)
- Nanjing (China)
- Taegu (Korea)
- Xian (China)
- New Zealand South (NZ)

Number of R10 WIE Member





1. WIE Engagement Project: R10 SYWLC

R10 WIE Committee organized 4 sessions, some of which were exclusively designed for female engineers and professions to discuss strategies to deal with issues relevant to their career, challenges of work-life balance and scarcity of female leadership in academia and industry.



WIE BEST PRACTICES, CHALLENGES AND OPPORTUNITIES

IEEE WIE leaders have contributed to various activities for inspiring, engaging, and advancing women in engineering. In this session, speakers introduce best practices, challenges and opportunities from their IEEE Journey. We hope you will take back the learning to implement in your groups.

SPEAKERS



Dr Aarti Milind Karande
Counselor,
IEEE Sardar Patel Institute of Technology
Student Branch WIE



Dr Mini Umalat
Chair,
IEEE Kerala Section WIE Chair Member,
IEEE WIE Committee 2020



Prof Takako Hashimoto
Past Chair,
IEEE WIE



Prof Lee Yoot Khuan
Member,
Pre-University Education
Coordination Committee
IEEE Education Activities Board

MODERATOR



Prof Rachana Garg
Member,
IEEE Region 10 WIE Committee



CAREER DEVELOPMENT FOR MID-CAREER WIE

This session focuses on providing professional career development for women who are in the middle of their careers. It aims to enable women engineers and researchers to reach their full potential and shine. We will also discuss how we can support the next generation of the WIE members to encourage and move forward together.

KEYNOTE SPEAKER



Dr Lisa Lazareck-Asunta
Chair,
IEEE WIE

PANNEL DISCUSSION - SPEAKERS



Dr Lisa Lazareck-Asunta
Chair,
IEEE WIE



Prof. Akinori Nishihara
Director,
IEEE Region10



Dr Supavadee Aramvith
Chair,
IEEE Region10 Section/
Chapter Committee



Emi Yano
Chair,
IEEE Region10 WIE Committee

MODERATOR



Dr Jing Dong
Chair,
Region10 Humanitarian Technology Activity Committee



1. WIE Engagement Project: R10 SYWLC



WIE LEADERS RECOMMENDATIONS

Based on the discussion results of session 3, facilitators make recommendations and present to R10 officers

SPEAKERS



Dr. Aishwarya Bandla
Chair,
IEEE Singapore Section WIE



Dr. Bushra Naeem
Chair,
IEEE Karachi Section WIE



Dr. Dewi Yanti Liliana
Secretary,
IEEE Indonesia Section WIE



Dr. Maheshi Dissanayake
Chair,
IEEE Sri Lanka Section WIE
Member, IEEE Region 10 WIE Committee

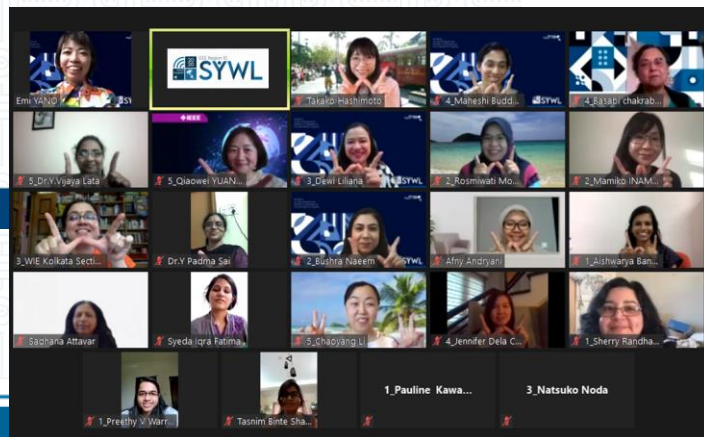


Dr. Y. Vijayalata
Chair,
Education Society Chapter
IEEE Hyderabad Section

MODERATOR



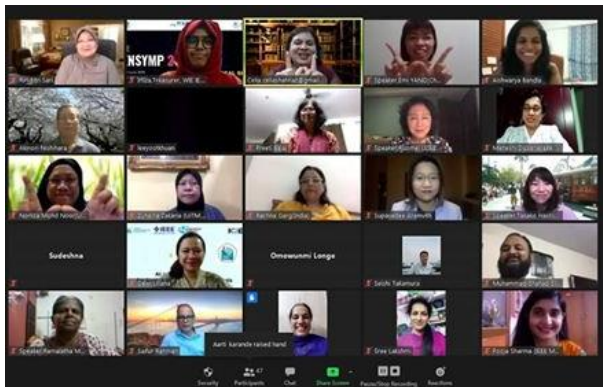
Prof. Basabi Chakraborty
Member,
IEEE Region 10 WIE Committee





3. WIE Visibility Enhancement

TENSYMP2020 :
WIE and WePower Track
by Bangladesh WIE
June 6, 2020



TENCON2020: Special WIE Track
November 19, 2020





4. R10 WIE Award

- IEEE R10 WIE Student/Professional Volunteer Award

IEEE R10 WIE received total 45 submissions for four awards categories in 2020.



R10 WIE Outstanding Professional Volunteer Award
Divya M G (Bangalore Section)



R10 WIE Outstanding Student Volunteer Award
Sai Divya Nallapaneni (Hyderabad Section)

▼ R10 WIE Outstanding Section Affinity Group Award
Hyderabad Section WIE Affinity Group



R10 WIE Outstanding Student Branch Affinity Group Award ▲
Sardar Patel Institute of Technology WIE
Student Branch Affinity Group, Bombay Section



MGA WIE Activities

- a) Continue R10 involvement in setting directions for MGA WIEC by participating in the Affinity Groups Subcommittee and Regional Representatives Subcommittee.
- b) Act as a coordinator between MGA WIE/Staff and R10 members
- c) MGA WIE Award 2020

WIE Inspiring Member of the Year Award:

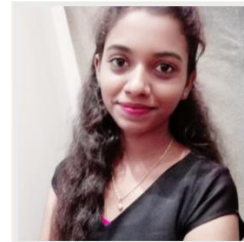
Winner: Lee Yoot Khuan (R10)

Honorable Mention: Divya M G (R10)



WIE Inspiring Student Member of the Year Award:

Winner: Indhumathi Gunasekaran (R10)



WIE Affinity Group of the Year Award:

Honorable Mention: WIE Malaysia AG (R10)