

**Introducing
IEEE Region 10
Student, Young Professionals, Women
in Engineering, and Life Member
Congress (SYWL) 2020**

**24-27 September 2020
Ambassador hotel
Bangkok, Thailand**





2018 Outstanding Section Membership
Recruitment and Retention Performance
THAILAND SECTION

ABOUT THE LOCAL HOST



The Institute of Electrical and
Electronics Engineers Thailand Section

Bangkok, Thailand



A bustling metropolis that truly **represents Thai society**

The center for Regional Science of Thailand

Visitor friendly City & Popular Destination

World-class venue, wide range of accommodation

Rich **in Thai culture** and its age-old charm alongside conventional modern day lifestyle



SYWL 2020
Bangkok, Thailand

Easy Accessibility



- Suvarnabhumi International Airport as an **aviation hub** of South East Asia
- 30 minutes from Airport to downtown Bangkok
- Full range of convenient public transportation in Bangkok



0 SYWL 2020
Bangkok, Thailand



Travelling to Thailand

DESTINATION	Estimated Travel Time	Estimated Airfare (\$USD)
EUROPE Belgium, Denmark, England, France, Germany, Italy, Spain, Sweden, Switzerland, Norway	~10-12 hours	~1,100-1,400
AFRICA South Africa	~12 hours	~800
NORTH AMERICA Los Angeles, New York, San Francisco, WashingtonDC, (USA) Canada, Mexico	~16-18 hours	~1,700-2,000
SOUTH AMERICA Brazil, Argentina	~20-22 hours	~1,900-2,200
AUSTRALIA Australia, New Zealand	~8-11 hours	~780-1,000
ASIA China, Japan, Korea, Chinese Taipei, Hong Kong, India	~2-5 hours	~350-850
SOUTHEAST ASIA Singapore, Malaysia, Indonesia, Vietnam, Lao PDR, Myanmar, Cambodia	~1-2 hours	~300-400



R10 SYWL 2020
Bangkok, Thailand

The
Ambassador
Bangkok



Congress Venue

The Ambassador Bangkok



VENUE MAP

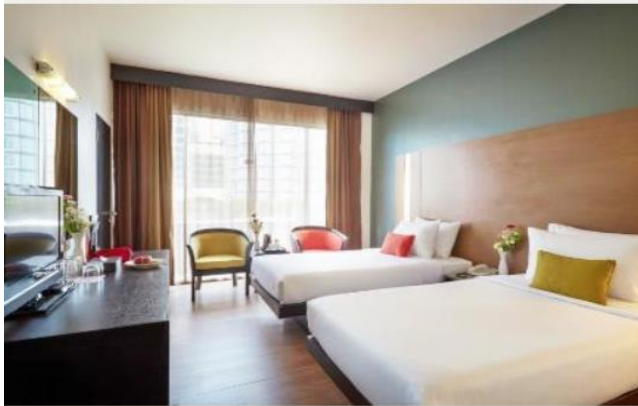
To/From	Distance	Time	By	Cost
Suvarnabhumi International Airport	26 km.	45 mins	Car via expressway	15 USD
Nana SkyTrain Station	500 m.	3 mins	Walk	-
Sukhumvit Underground Station	1.1 km.	13 mins	Via Sky Train and walk	0.52 USD
Airport Rail Link	2 km.	8 mins	Via Sky Train	1 USD



0 SYWL 2020
Bangkok, Thailand

Conference venue Accommodation

Ambassador Hotel Bangkok is operating as an integrated all-in-one hotel and convention center. The hotel is featuring contemporary style architecture and comprises of 2 towers offering 755 rooms and suites furnished with comfortable amenities and facilities that can cater to business travelers, congress delegates, and leisure seekers.



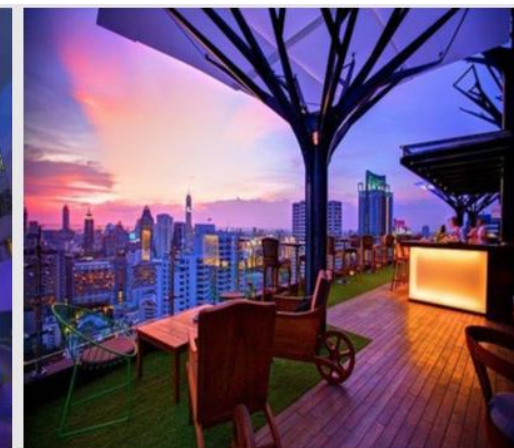
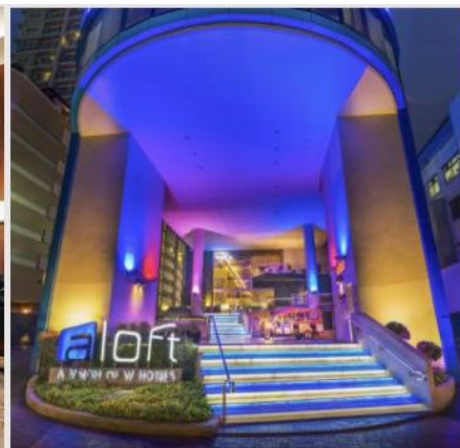
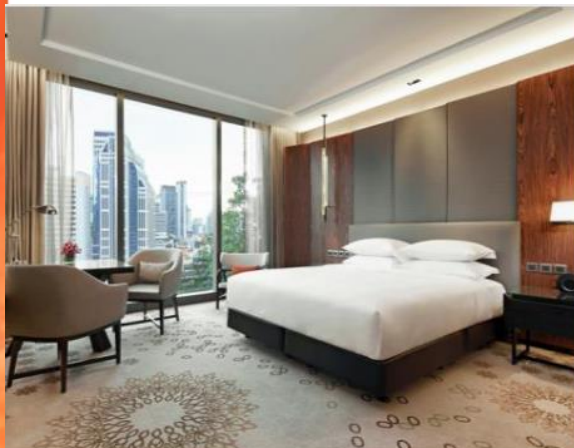
Proposed accommodation rooms for IEEE R10 SYWL 2020 delegates:

- Standard room (25 sq.m.) in the main wing **(1,700 THB per night)**
- Superior room (35 sq.m.) in the Tower wing **(2,000 THB per night)**
- Same rate for single or double occupancy
- 3 night accommodation is included in the registration fee
- Fully air-conditioned and are fitted with Digital TV, Tea and Coffee making facilities, International telephone dialing, a personal electronic safe, hair dryer
- Well equipped bathroom with complementary personal amenities, some room have a pool view and connecting rooms are available on request
- Room service is available 24 hours a day
- Free buffet breakfast
- Free Wi-Fi



R10 SYWL 2020
Bangkok, Thailand

Recommended Accommodation around conference venue



Hotels	No. of rooms	Distance from the Venue
Hotel class A (120 USD and above)		
Hyatt Regency Bangkok	505	450 m
Fraser Suite Sukhumvit Bangkok	163	550 m
Solitaire Club Sky Bangkok	319	450 m
Citadines Sukhumvit 11 Bangkok	127	260 m
Hotel Class B (90-120 USD)		
Holiday Inn Express Bangkok	161	350 m
Aloft Bangkok Sukhumvit 11	298	300 m
Eleven Hotel Bangkok	188	130 m
Mercure Bangkok Sukhumvit 11	232	180 m
Hotel Class C (50-90 USD)		
Salil Hotel Sukhumvit Soi 11	84	180 m
Grand President Hotel Bangkok	452	140 m
Grand Swiss Sukhumvit 11 by Compass Hospitality	144	150 m
City Lodge Bangkok	266	290 m

0 SYWL 2020
Bangkok, Thailand

Function space



Function	Proposed Function Space	Level	Size (sq.m.)	Capacity	Set up
Plenary Session	Convention AB	Ground	747	450	Theater
Breakout Room 1	Convention D	Ground	170	100	Classroom
Breakout Room 2	Orchid 4	2	260	60	Classroom
Breakout Room 3	Garden 1	2	165	80	Classroom
Breakout Room 4	Garden 3	2	99	30	Classroom
Breakout Room 5	Cattleya 1	3	195	60	Classroom

R10 SYWL 2020 Tentative Program

	September 24, 2020
9.00-12.00	Pre-Congress workshop (2)
13.00-16.00	Pre-Congress workshop (2) / Registration open
17.00-21.00	Opening Ceremony / Welcom Reception Dinner
	September 25, 2020
8.00-10.00	Plenary Keynote Session (4 speakers)
10.00-17.00	Four breakout sessions (Student/YP/WIE/LM) / Lunch
18.30-21.30	SYWL 2020 Award night and Dinner
	September 26, 2020
8.00-10.00	Plenary Keynote Session (4 speakers)
10.00-17.00	Four breakout sessions (Student/YP/WIE/LM) / Lunch
18.30-21.30	Cultural night and Dinner
	September 27, 2020
8.00-10.00	Plenary Keynote Session (4 speakers)
10.00-13.00	Closing Ceremony and Lunch



R10 SYWL 2020
Bangkok, Thailand

R10 SYWL 2020 Organizing Committee



General Chair
Zia Ahmed
Region 10 Vice Chair



General Co-Chairs
Viboon Rerksirathai
Thailand Section Chair



General Co-Chairs
Kirapat Jiamset
Thailand Section Vice Chair



General Co-Chairs
Supavadee Aramvith
Thailand Section MD Chair

R10 SYWL 2020 Organizing Committee

Advisory Committee

Akinori Nishihara

Deepak Mathur

Takako Hashimoto

Seishi Takamura

Region 10 Director

Region 10 Director-Elect

Region 10 Secretary

Region 10 Treasurer

Siri Tranhavatana

Narit Srinuan

Jitkasem Ngamnil

Ekachai Leerarasmee

Thailand Section Past Chair

Thailand Section Past Chair

Thailand Section Past Chair

Thailand Section Past Chair



R10 SYWL 2020
Bangkok, Thailand

R10 SYWL 2020 Organizing Committee

Young Professional track

YP Chair	Takau Suzuki	R10 YP Chair
YP Co-Chair	Kriangkrai Sooksood	KMITL

Women in Engineering track

WIE Chair	Emi Yano	R10 WIE Chair
WIE Co-Chair	Waree Kongprawechnon	SIIT

Student track

Student Chair	Huynh Thanh Binh	R10 SAC Chair
Student Co-Chair	Watana Kaewmanee	KMUTNB

Life member track

LM Chair	Rajendra Asthana	R10 LM Chair
LM Co-Chair	Prasit Prapinmongkolkarn	Chulalongkorn U.

Finance subcommittee

Chair	Michael Ong	R10 CTS Chair
Co-Chair	Somying Thainimit	Kasetsart U.



R10 SYWL 2020
Bangkok, Thailand

R10 SYWL 2020 Organizing Committee

Technical Program & Local Industry Engagement Subcommittee

Chair	Amorn Jiraseree-amornkul	Silicon Craft Tech
Co-Chairs	Jitkasem Ngamnil	Mahanakorn U.
	Praditpong Suksirithawornkul	ABB Co. Ltd.

Sponsorship Subcommittee

Chair	Ekachai Leerarasmee	Chulalongkorn U.
Co-Chair	Supavadee Aramvith	Chulalongkorn U.

Publicity & Webmaster & Social Media subcommittee

Chair	Vidhaya Rugpong	EGAT
Co-Chairs	Watchara Ruengsang	Chulalongkorn U.
	Apinun Intarachaiya	Chulalongkorn U.

Registration

Chair	Charnchai Pluempitiriyavej	Chulalongkorn U.
-------	----------------------------	------------------



R10 SYWL 2020
Bangkok, Thailand

R10 SYWL 2020 Organizing Committee

Local Arrangement

Chair	Patamaporn Sripadungtham	Kasetsart U.
Co-Chair	Tasaporn Intarachaiya	Chulalongkorn U.

Secretariat

Chair	Boonsit Yimwadsana	Mahidol U.
Co-Chair	Thittaporn Ganokratanaa	Chulalongkorn U.



R10 SYWL 2020
Bangkok, Thailand

R10 SYWL 2020

Supporting Organizations



PRIVATE SECTOR

- Thai Airways International
- Thai Hotels Association



GOVERNMENT

- The Royal Thai Government
- The Bangkok Metropolitan Administration
- Thailand Convention & Exhibition Bureau



R10 SYWL 2020
Bangkok, Thailand

R10 SYWL 2020

Potential International/IEEE Partners

IEEE Educational
Activities



Humanitarian Activities
Committee

 **IEEE**
youngprofessionals

IEEE Women in Engineering
Wie

IEEE
Signal
Processing
Society™



R10 SYWL 2020
Bangkok, Thailand

R10 SYWL 2020

Potential Sponsors



Iconic Attractions (I)

Bangkok and Nearby Attractions

As the capital of Thailand, Bangkok is a display of merging the old with the new. Thus, visitors have fun exploring the diversity of the city's sights that also adds an element of surprise in seeing and experiencing the dynamic Thai culture and lifestyle.

Grand Palace and Emerald Buddha Temple

On any visit to the "Land of Smiles", this is a definite must-see for everyone. The compound's golden spires reaching upward to the sky and impressive architecture proudly reflect the Thai nation.

Bangkok Old Town by Tuk Tuk

Tuk tuks, three-wheeled motorized trishaws, are the most exciting means of transport in Bangkok. Use this fun transport to visit the old Bangkok to explore colorful fruit and flower markets and other well-known sights.



R10 SYWL 2020
Bangkok, Thailand

Iconic Attractions (II)

CHIANG MAI

Home of the ancient Lanna culture, is also the best starting point to visit indigenous hill tribes, go elephant trekking and river rafting, as well as shopping for handicrafts and tasting unique cuisine.



CHIANG RAI

Thailand's most northern province is the location of the Golden Triangle where the borders of Thailand, Lao PDR, and Myanmar meet. Also, take a visit to Mae Sai to the border market or take a boat trip along the Mekong River. Visit Doi Tung to discover how the Mae Fah Luang Foundation has replaced opium poppy cultivation with more valuable cash crops such as coffee and macadamia nuts.

MAE HONG SON

Located in the northwest, this province is full of verdant jungles, magnificent waterfalls, and elephant trekking. It is also where you can find the town of Pai that is a popular northern destination for everyone.

KANCHANABURI

Located west of Bangkok, Kanchanaburi is renowned for its Bridge on the River Kwai, well-known waterfalls, pristine national parks, and virgin forests. Together, they offer visitors an intriguing experience through a variety of eco and adventure activities; such as, rafting, bird and animal watching, elephant riding and jungle trekking.



R10 SYWL 2020
Bangkok, Thailand

welcoming you
To
IEEE Region 10 SYWL 2020
in
Bangkok, Thailand

More information at
sywl2020.ieeer10.org
Launching mid March 2020
Contact: Supavadee Aramvith
supava@ieee.org

