

IEEE R10 Meet 2018

R10 Life Member Activities in 2017 and 2018

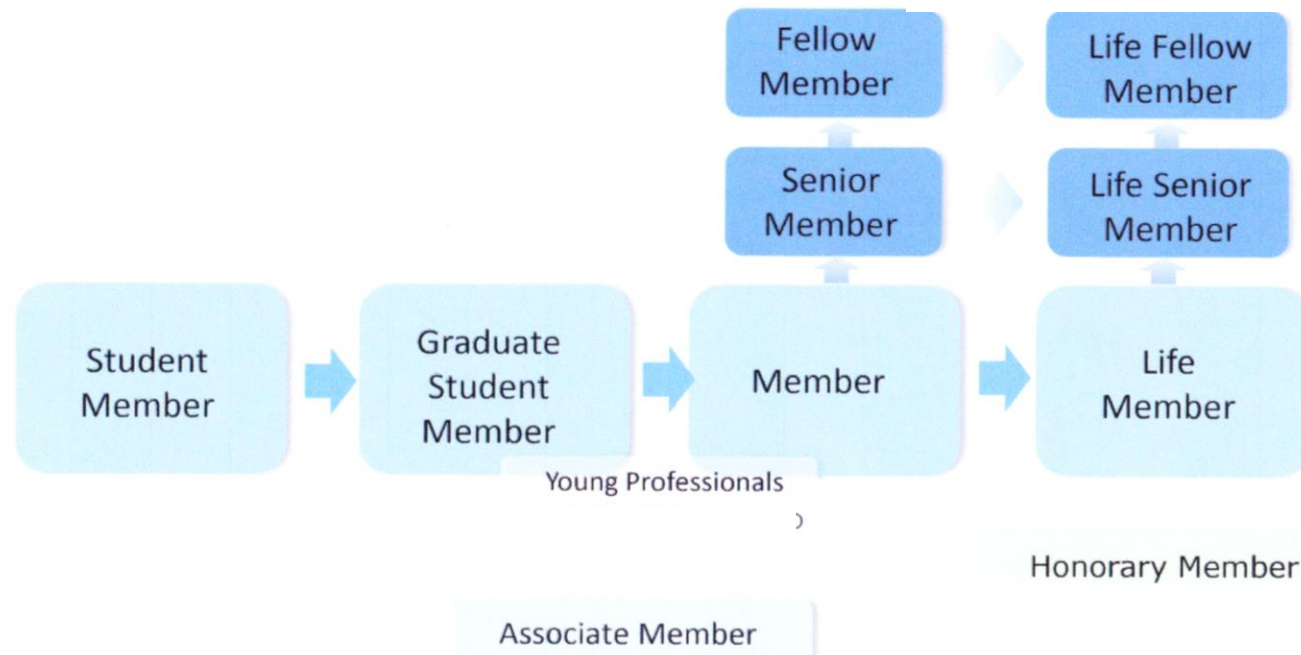
March 3, 2018

R10 Life Member Coordinator

Tomonori Aoyama



Classification of IEEE Membership



8/28/2017

Society Affiliate

What is Life Member ?



Age A : More than 65 years old

Membership Period M

Life Member : $A+M \geq 100$

Benefit of LM:

Dues and regional assessments are waived for a Life Member.

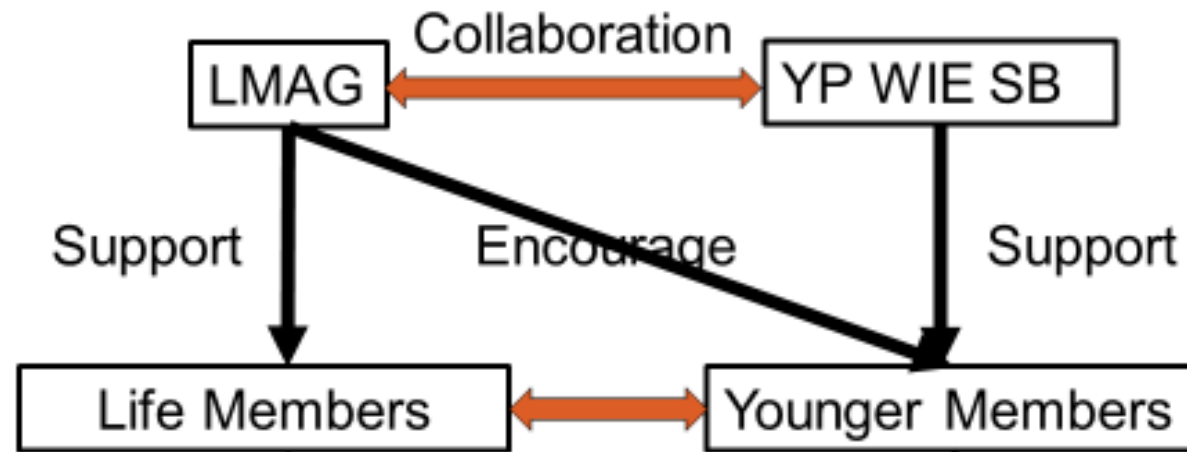
For qualifying Life Members, society fees are waived.

Individuals may receive reduced member rates at conferences where IEEE is the sole sponsor.

Life Members continue to receive the same benefits that are available to other IEEE members.

Life Members continue to receive the benefits included in the IEEE Member Discounts Program (includes IEEE Insurance Program).

Position of LMAG in affinity groups



Number of LM is going up
Want to contribute to Society
Want to learn hot topics

Lack of experiences
Need advices from LM

Current Status of R10 Life Member

(Red: as of 8 Jan 18)

IEEE Total **35,151** / 418,264 → 8.4%

LF **3,393**

LS **8,284**

LM **23,474**

R10 Total **1,910** / 126,082 → 1.5%

LF **449**

LS **502**

LM **959**

LM in JC **1,006** / 14,214 → 7.1%

LMAG (Life Member Affinity Group)

7 LMAGs + **2 LMAGs** newly established in 2017

New South Wales (**136**)

Bombay (**23**)

Tokyo (**651**)

South Australia (**20**)

Kerala (**16**)

Kansai (**156**)

Victorian (**89**)

Delhi (46)

Nagoya (71)

(Number of LM) as of 8 Jan 18

2018 objectives of activities for life life members in R10

- A. **New establishment of LMAG → 9 + 5**
- B. **Activation of R10 LM Committee**
- C. **Budget proposal in 2018 to promote R10 LM activities**
- D. **Solicitation for LMAG to propose the LMAG Achievement Award.**

LMAG is required to support LM activities !

In 2018, 5 LMAGs are expected to start.

Target sections

Bangalore (31)

Beijing (28)

Hong Kong (54)

New Zealand (Central+North+South) (49)

Seoul (27)

Singapore (39)

Thai Pei (55)

etc.

R10 Funds for LM activities

In 2017 US\$ 3,000

1,500 for Start up LMAG

1,000 for LMAG Collaboration Activities

500 for Outstanding LMAG

In 2018 US\$ 4,000 (Proposal)

2,500 for Start up LMAG

1,500 for Collaboration Activities

Conclusion

- Life Member will increase gradually in IEEE.
- Some members want to contribute to the society after retirement.
- Some members may leave IEEE after retirement.
- IEEE should utilize their expertise and experience for younger IEEE members activities.
- LMAG should be established in more sections as a core of Life Member activities.
- Outstanding LMAG is to be nominated for the LMAG Achievement Award.