

IEEE TENCON 2018

- *Intelligence Outbreak* -

October 28 - 31, 2018
Ramada Plaza Hotel, Jeju, Korea



Important Dates



Paper submission

May 21, 2018



Notification of acceptance

July 23, 2018



Final manuscript submission

August 27, 2018

TENCON is a premier international technical conference of IEEE Region 10, which comprises 57 Sections, 6 councils, 21 subsections, 514 chapters, and 1159 student branches in the Asia Pacific region. IEEE TENCON 2018 is going to be held at Jeju, the island of breeze, Korea. The theme for TENCON 2018 is intelligence outbreak; researchers and engineers will be brought together from academia and industry, and they will freely expose their ideas and opinions on emerging issues that arise in the field of electrical, electronics and computer engineering as well as information technologies.

The scope of the conference includes but not limited to the following areas:

- Antenna and microwave
- Artificial intelligence and learning
- Biomedical engineering
- Circuits and systems
- Cloud computing and big data analysis
- Communications and networks
- Computer systems

- Electronic devices, materials and processing
- Humanitarian technologies
- Internet of things
- Photonics
- Power and energy
- Robotics and control systems
- Signal and image processing

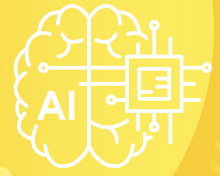
Prospective authors are invited to submit full paper with three to four pages in double-column IEEE conference format via the conference website <http://www.tencon2018.org>. More information about paper format and guidelines for paper submission can be found at the conference website. The presented papers will be submitted to IEEE Xplore, which is indexed by major databases. TENCON 2018 will feature both invited and contributed papers. The best paper will be selected from the contributed papers for awards.

IEEE TENCON 2018

- *Intelligence Outbreak* -

October 28 - 31, 2018

Ramada Plaza Hotel, Jeju, Korea



About Jeju



Jeju Island is the largest volcanic island in Korea and it has a mild oceanic climate throughout the year with the smallest annual temperature range in South Korea. Officially called Jeju Special Self-Governing Province, this best tourist destination boasts mild weather, as well as scenic beauties of beaches, waterfalls, cliffs and caves. The island is 73km wide and 31km long with a total area of 1,848.85km². Jeju is the largest island in South Korea.

Jeju Island is well known for its abundance of scenic natural wonders and cobalt blue sea. The island was designated as geoparks by UNESCO and is the world's first recipient of UNESCO's triple crowns in the fields of nature and science - Biosphere Reserve (2002), World Natural Heritage (2007) and World Geoparks (2010).

Access to Jeju Island



Jeju International Airport, the 2nd largest airport in South Korea, is located in the north of Jeju Island. Jeju International Airport easily connects Korea with the major cities of China, Japan, and other Southeast Asian countries, via a total of 29 direct flight routes (13 domestic and 16 international).

There are three ways to fly to Jeju Island: by direct international flight, by transferring at either Incheon International Airport or Gimpo Airport to a domestic flight to Jeju. IEEE TENCON 2018 secretariat recommends that visitors take a direct international flight to Jeju Island for their convenience.

Direct International Flights to Jeju Island

International routes connect Jeju with 22 cities in 3 countries (Tokyo, Osaka, Nagoya, and Fukuoka in Japan and Ningbo, Dalian, Beijing, Shanghai, Xiamen, Xian, Shenzhen, Shenyang, Wenzhou, Changchun, Zhengzhou, Changsha, Fuzhou, Harbin, Hong Kong in China as well as Taipei in Taiwan) With the exception of eleven countries, all international passport holders are able to enter Jeju visa-free for a maximum of thirty days.

For more information of Jeju International airport
▶ <http://www.airport.co.kr/jejueng/main.do>

Via Incheon/Gimpo Airport to Jeju Island

Upon arriving at Incheon International Airport, passengers can either transfer directly to a domestic flight to Jeju, or travel to Gimpo Airport, which offers a variety of domestic flights.

For more information of

- ▶ Via Incheon to Jeju: <http://www.airport.kr/pa/ko/d/index.jsp>
- ▶ Via Gimpo to Jeju: <http://www.airport.co.kr/>

For more information, please, contact

Secretariat

Sungmin Oh

E-mail. tencon2018@tencon2018.org

Telephone. +82-42-472-7460

